

GPA Newsletter

News from the Georges Pond Association

**Become a GPA *Sustaining Member* today
to protect the pond and watershed.**



A second
alum treatment
of Georges Pond
will be conducted
the week of May 10.

Together We've Made So Much Progress

The GPA is grateful to the many property owners and friends of the pond for working together to preserve and protect Georges Pond.

Together we've accomplished a great deal. We've built a robust lake association with 175 members, solid leadership, and a cadre of volunteers. Our trained LakeSmart volunteers are educating neighbors about best land and water-management practices. Half of all pond properties have had a LakeSmart survey.

Membership dues of \$25 cover the GPA's annual operating expenses of approximately \$3,500 (insurance, newsletters, website, LakeSmart program, and annual meeting). In addition, over the past 3 years, GPA members and Friends of the Pond have contributed \$350,000 to conduct an initial year of scientific research and two alum treatments of the pond (May 2020 and May 2021).

Today, we can celebrate that the water quality of the pond is the best in decades.

Moving Forward

There's a lot more we must do to extend the benefit of our recent alum treatments -- for 20 years or more, we hope.

As a community, we need to continue our highly successful LakeSmart program (70 owners have learned how to "beef up your buffer"), encourage well-maintained septic systems, and improve gravel roads.

Continued next page.

Keep this in mind: *To protect the pond, we must protect the watershed.*

Following the guidance of our science consultants and partners at the Maine DEP, we've developed a 10-year Watershed-Based Management Plan (WBMP) to focus our energies on improving conditions in the Georges Pond watershed. All efforts will help minimize stormwater runoff going into the pond and, thereby, extend the benefits of the restorative alum treatments.

Funding the Watershed-Based Management Plan

The GPA will rely mainly on grants, like the successful Maine DEP 319 Phase 1 grant (2020-2021) currently underway, to help fund watershed projects, including road improvements, septic system surveys, and upgrades to the public beach. (We're now in the process of applying for a 319 Phase 2 grant for 2022-2023.)

At the same time, GPA members will need to step up and pay for key components of our 10-year Watershed-Based Management Plan: water monitoring, education, communications, and grant writing. Water monitoring is especially important to be able to qualify for new grants.

In order to pay for these necessary expenses, the GPA **must increase annual operating revenue, but how?** We all want to avoid another "special assessment" fundraising campaign, so as an alternative, we propose to **expand our membership options.**

Up until now, we've intentionally kept membership dues as modest as possible, which has allowed us to maximize participation and avoid setting up a financial barrier for joining.

At this point, because we need to increase income, the GPA is modifying our current membership program. We hope to maintain and, if possible, even grow the current size of our membership while adding a tiered Sustaining Members program. Our hope is that if sufficient numbers of GPA members "bump up" the amount of dues they pay annually, together we'll generate enough income to pay for our essential water-monitoring and educational programs.

First, decide whether to become a sustaining member:

Regular membership program:

If you wish, maintain your GPA membership by paying \$25 dues annually (about \$2 a month). We're grateful for your continued participation, and your dues help us keep the lights on.

New sustaining membership program:

If you're willing, become a sustaining member by increasing the amount of dues you pay annually. Your enhanced dues will help us pay for indispensable elements of our WBMP.

Second, choose your Sustaining Membership category:

Dragonfly	\$5 monthly	(\$60 per year)
Chickadee	\$10 monthly	(\$120 per year)
Hummingbird	\$25 monthly	(\$300 per year)
Loon	\$50 monthly	(\$600 per year)
Eagle	\$100 monthly	(\$1,200 per year)

Regular and Sustaining memberships cover two people.

Third, choose how you wish to pay:

Mail your check, payable to the GPA, to PO Box 30, Franklin ME 04634.

Donate online (via Stripe or PayPal) at www.GeorgesPondAssociation.org

If you wish, set up **recurring monthly payments** on your credit card.

Discount! Add family members to your regular or sustaining membership @ **\$10 per person.**

Benefits of a Sustaining Membership

1. Preserve Georges Pond for the next generations.
2. Protect your property values.
3. Build on the financial investment you've already made in funding the alum treatments.
4. Take an IRS tax deduction as applicable by law.
5. If you wish, have your name listed as a Sustaining Member in the GPA newsletter.
6. Designate your Sustainer membership as a memorial gift or in honor of someone special.
7. Inspire others to step up.
8. It's simple and easy: Write a single check or set up recurring monthly credit card payments.
9. Your participation will decrease the need for further fundraising.
10. Enjoy making a difference as a **dedicated lake steward**.

Thank you for stepping up, once again, to preserve and protect our beloved pond.



Yes, please sign me up as a GPA Sustaining Member:

I wish to donate at the (**circle one**) Dragonfly (\$5 monthly), Chickadee (\$10 monthly), Hummingbird (\$25 monthly), Loon (\$50 monthly), or Eagle (\$100 monthly) level.

I'll pay (**circle one**) by check *or* donate online.

[Please print:]

Name:

Street:

City/State:

Zip:

Add names of family members:

Yes/no (circle one): List our names as Sustaining Members in the newsletter.

Detach and use the attached envelope to mail your membership pledge.

MISSION STATEMENT

We, the members of the Georges Pond Association (GPA), are united to promote the protection and enhancement of the water quality of Georges Pond; preserve its ecological, economic, recreational and aesthetic value; and work with the members and other interested parties to monitor water quality and promote responsible land use practices.

Georges Pond Association is a 501(c)3 organization.

GeorgesPondAssociation.org

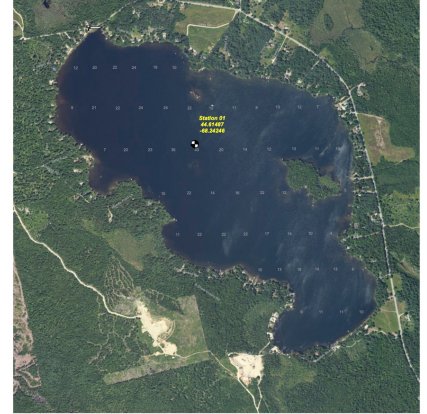
@GeorgesPondAssociation



**If your pond neighbors
are not yet GPA
members,
why not gift them
with a
GPA membership
and
get them involved?**

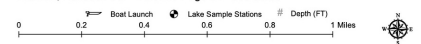
Thank you

**for everything you
do to protect and
preserve Georges Pond.**



George'S Pond MIDAS # 4406

Franklin, Hancock Co. - Delorme Page 24 - 358 acres



Georges Pond Association
PO Box 30
Franklin, ME 04634