

FALL 2022

# GPA Newsletter



## News from the Georges Pond Association

### PROTECTING THE POND, ONE DAY AT A TIME

#### Highlights from the 2022 Annual Meeting

**More than 50 GPA members and friends gathered** recently at the Franklin Town Office (and online via Zoom) for the 2022 GPA Annual Meeting. After welcoming folks, GPA President John Eliasberg **reviewed GPA accomplishments in 2021 and 2022**, including the highly successful second Alum Treatment in early May 2021, numerous LakeSmart surveys completed (60% of all pond properties now surveyed), completion of our DEP 319 Phase 1 grant (valued at \$79,000), and our receiving a followup DEP 319 Phase 2 grant (valued at \$140,000).

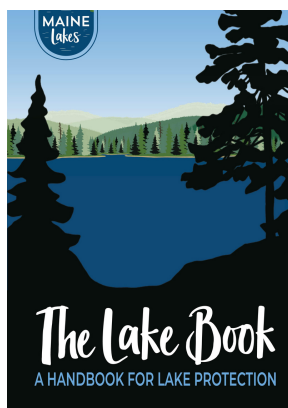


In addition, the GPA has maintained a robust membership, added about \$20,000 in revenue so far this year from membership dues and donations, published a quarterly newsletter for a mailing list of about 250, continued to conduct extensive water monitoring of the lake, and trained GPA volunteers about invasive aquatic plants.

Encouraging us to **protect the lake's water quality by "making prevention our priority,"** Eliasberg reminded us that "the greatest threat to our Pond is the erroneous belief that someone else will save it." Together, we're the ones who've stepped up and made all these amazing accomplishments happen.

The good news is that **everyone of us can make improvements to protect Georges Pond**, and when we act together, we make a *big* difference.

#### Distributed at the Annual Meeting:



Those who attended the Annual Meeting in person were able to pick up **numerous handouts** about LakeSmart, "beefing up buffers" with native plants, Courtesy Boat Inspections and invasive plant species, protecting loons and other wildlife, and maintaining septic systems. In addition, free copies of Maine Lakes Society's *The Lake Book: A Handbook for Lake Protection*, fourth edition, were distributed along with free copies of the GPA's "All Roads Lead to Camp" poster. If you missed the meeting, let us know at [GeorgesPondAssociation@gmail.com](mailto:GeorgesPondAssociation@gmail.com), and **we'll mail you the booklet and/or poster.**

## Five Elected to GPA Board of Directors

At the Annual Meeting, the GPA membership **elected** two returning and three new people to the Board **to serve three-year terms**. Welcome to the Board Molly, Jeff, and Stacy, and thank you, Callie and Steve, for agreeing to continue for a second term.

Two others Board members, **Nancy Cooper and Yvette Kovats, were recognized for their service** as they closed out their terms. Thank you, Nancy and Yvette, for your leadership as the GPA negotiated not one, but two alum treatments and secured not one, but two major DEP grants, all during a pandemic!

### Molly O'Dea

In the 1970s my parents began to visit Georges Pond, thanks to their friends, the Lovalls. Throughout their childhood, my own daughters spent summers here with my school-teacher parents, and I joined them for my summer vacation.

In 2005 I rebuilt the original cabin, which is where I live year-round today.

The pond is thought of as home by my family, and the preservation of this beautiful and beloved resource is deeply important to me. I've been a member of the GPA for years, and I enjoy working to safeguard the health of our pond.



### Jeff Schaefer

My wife Barbara and I reside in the Northern Kentucky area along with two grown sons. Raised in Buffalo, New York, I'm a practicing attorney with an undergraduate degree in chemistry. Previously, I worked in a crime laboratory for 15 years and for a while as a police officer.

Starting in 1962 (when I was age 7), my family and I spent a couple of weeks each July at Marvin Ellison's place (then Koch's Camp). Since 2006, we rent the Beyers' camp each July. We've been GPA members for some time and became sustaining members last year.

My Facebook page states: "I reside in Kentucky, but live in Maine."

### Stacy White

Born in Panama in 1965, I'm a Navy brat. In 1976 my father retired in Winter Harbor, but then he worked for the State Department, and we relocated to Brussels, Belgium. I came back for my senior year and graduated from Sumner Memorial High School.

I've known my husband Eric since 6th grade, and we married in 1984. We've lived on Georges Pond on and off and currently live in the camp Eric's family first owned.

After graduating from Husson College, I've been a legal administrative assistant, manager of a restaurant, manager of a funeral home, and now a real estate agent.

Along with Eric's aunt and uncle, we've built a home on Murch Island in Georges Pond.



**Two Board members Re-Elected for a Second Term**

**Callie Carr**

Born in western Massachusetts, I moved to Maine in the late 1990's and first visited Georges Pond in 2001 with my then-boyfriend John Carr, whose grandfather built the family camp on the pond in 1949. In 2005, we were married at camp, which has made the place even more special.



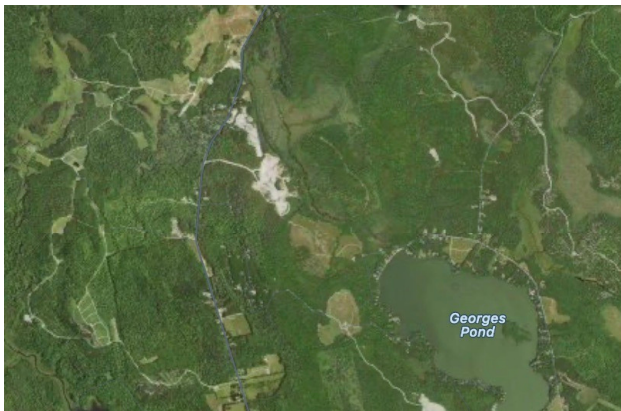
My background is in healthcare communications and marketing, but I've always had an interest in environmental conservation from the public health perspective. I'm so proud of how the Georges Pond community has come together to restore the pond, and I'm thrilled to be serving another term on the GPA Board!

**Stephen McMullen**

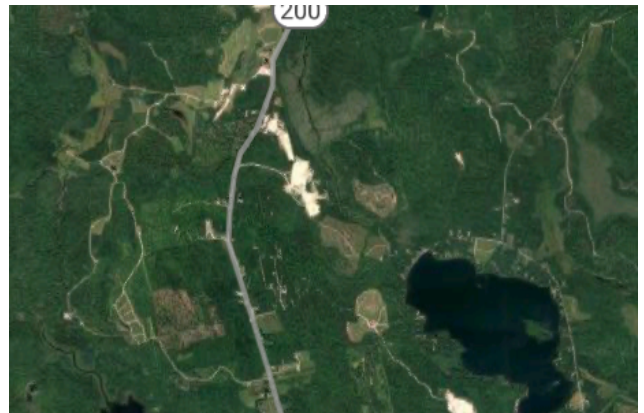
Steve McMullen is retired from Marine trades. As he explains, "Joe Jordan got us interested in Georges Pond, and we have been here for the last 25 years. We've always enjoyed the four seasons on the pond with our family and friends."



***Remember the Pond BEFORE the Alum Treatments?***



**BEFORE**



**AFTER**



**Dogs swimming in pre-Alum "pea soup" -- and in post-alum clean lake.**

## GPA Treasurer's Report

### "We're in solid financial shape," reports GPA Treasurer

"Because **GPA members** and our many Friends of the Pond **are so caring, committed, generous, and, yes, visionary,**" GPA treasurer Marvin Ellison noted at the Annual Meeting, "my job is easy and enjoyable." With all bills paid and \$76,000 in the bank, the GPA is in good financial shape, thanks to the financial support of its membership and prudent fiscal management by the GPA Board of Directors.

**"But why does the GPA need this much in the bank?"** Ellison asked. The answer is that the GPA has an annual operating budget of \$3,500, plus annually \$11,000 to \$12,000 in expenses related to the GPA's ten-year Watershed-Based Management Plan. Our operating expenses include the GPA website, our quarterly newsletters, two insurance premiums (liability and Directors and Officers), and ongoing water monitoring.

"A solid bank balance also allows us to pay upfront for 319 grant projects, including camp road improvements, which the Maine DEP then reimburses. **Without available funds," Ellison explained, "we wouldn't be accomplishing all that the GPA has ambitiously taken on."**

In addition, it's not too early to be setting aside funds for our next alum treatment, projected for sometime in the next 20-25 years. As GPA President John Eliasberg reported at the August 13 meeting, **"Alum treatments work, but they don't last forever.** For example, Lake Cochnewagon was successfully treated in 1986, had good results for 20 years, but then started blooming in 9 of the next 10 years. Finally, they had to do a follow-up treatment in 2019. Accordingly, **the GPA should reasonably expect to treat our Pond again, sometime in the future."**

#### MEMBERS: 154

Regular members:	54
Sustaining members:	79
Family members:	21

#### REVENUE: \$104,000

*Revenue is 2021 Year End Cash + 2022 Membership Dues + 2022 Donations + ME DEP reimbursements*

Carry-over from 2021:	\$69,000
Membership dues:	\$14,500
Donations:	\$8,700
319 Reimbursements:	\$11,800

#### EXPENSES: \$28,000

*Expenses are 2022 operating expenses + 319 Grant payments*

**BANK BALANCE AS OF AUGUST 18: \$76,000**



## GPA 2022 Members and Donors Update

The Summer 2022 newsletter listed current dues-paying regular and sustaining GPA members along with donors, but in the meantime others have stepped up. We also inadvertently omitted a few names from the previous list, which, happily, folks called to our attention. **If your name is missing, please email [GPATreasurer2020@gmail.com](mailto:GPATreasurer2020@gmail.com)** so we can report further corrections and additions. **Thank you!**

### Regular Members

Michael and Michelle Fielding  
Art and Carolyn Gilbert  
Vena (Teddy) Giles  
Christian and Danielle Hartley  
Mark Herklotz  
Mary Katsiaficas  
Sandra Kearns  
Maurice S. (Moe) Oliver  
Allen and Kathy Parsons  
Cindy Strout  
Hyla and Liz Tracy

### Sustaining Members

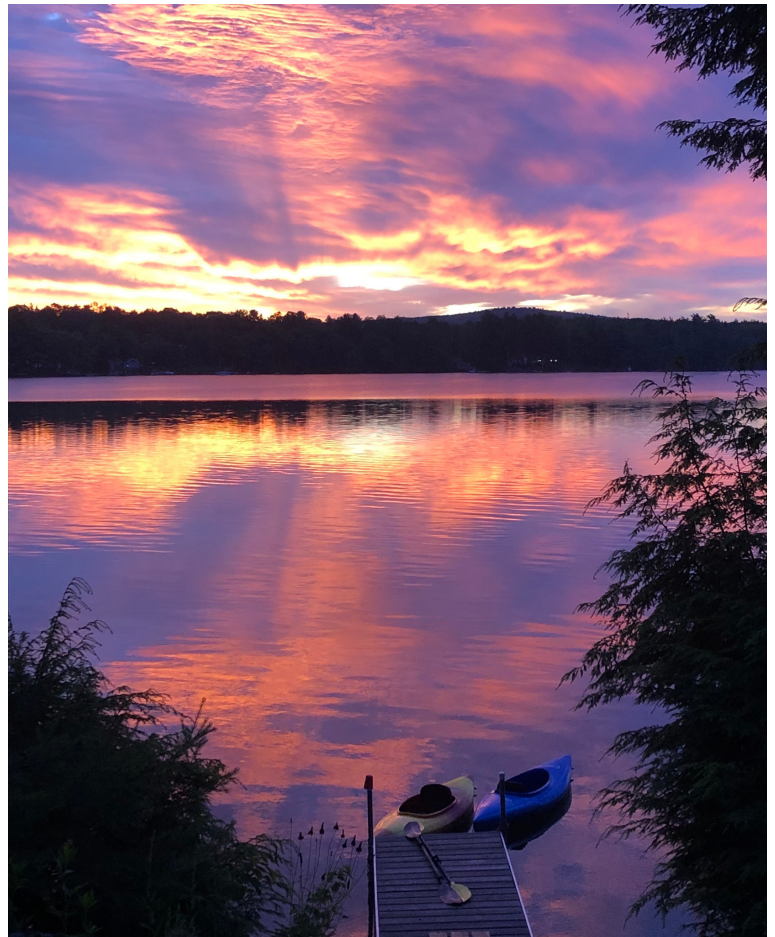
Jim and Sharon Beyer  
Roberta DeMuro  
Fred and Suellen Genter  
June and Cary Swan  
Dan and Jill Talbot

### Donors

Jim and Sharon Beyer  
Carlton Erikson  
Arthur and Carolyn Gilbert  
Nancy and Sam Ladd

### Memorial Gifts

In memory of Dr. and Mrs. Richard L. Hall  
from Nancy Cooper  
In memory of Sheila Todd from Marie Phero



Sunrise on Georges Pond

Photo courtesy Sharon Beyer

*It's never too late to join the GPA! Sign up online or send your check to the GPA, PO Box 30, Franklin, ME 04634. THANK YOU!*

A regular membership costs \$25; Sustaining members pay anywhere from \$5 monthly (\$60 annually) to \$100 monthly (\$1,200 annually).

*Don't forget to sign up family members, friends, and renters, too!*

*Thank you!*



Congratulations to **SHARON OLIVER** for receiving the **Georges Pond Stewardship Award** this year "for all your efforts to protect the Pond, for participating in the 319 Residential Grant program, and for being a great steward!"

***Ready to apply for a 319 Residential Grant to make improvements to your property?***

***Contact  
GeorgesPondAssociation.org  
for more information.***

**Georges Pond Association**

PO Box 30

Franklin, ME 04634